

Register for the GP Update Study Day Live Course for Lancashire and South Cumbria Training Hub, Fylde Coast

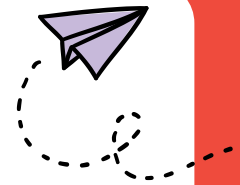
A highly engaging and interactive online course, from the comfort of your home (or practice)! We'll cover the latest changes in evidence and guidelines relevant to Primary Care. Our presenter will host the course live from our TV Studio, run interactive polls and Q&A sessions and offer practical tools to help you change your practice straightaway.

COURSE DETAILS

DATE: Saturday 24 February 2024

TIME: 10:00 to 16:00

The course is open to GPs, ACPs and PAs.



[CLICK HERE TO BOOK](#)

What we will cover

- Lipid management NEW NICE guidance - is it statins and QRISK 3 for everyone?
- COPD: Does the 2023 GOLD guidance change care?
- Asthma: integrating GINA and NICE and how should 'SIT' change our approach
- Diabetes

And a fresh look at some primary care conundrums including:

- Migraine
- Wheeze in preschoolers
- Eczema

And lots more – sign up early but watch this space for more details!

What you can expect on the day

- **Learning to suit all styles** - Varied, dynamic teaching.
- **Interaction** - Interact with the presenter and ask questions.
- **Flexibility** - tune into the live-hosted event and/or to re-watch on demand, at any time, for 12 months after

What will I get

- 5 CPD hours of interactive & practice-changing online learning, with downloadable certificate
- 12 months access to the extended on demand course
- 12 months access to the online written resources with hundreds of articles

Online Written Resources

Red Whale Knowledge is our library of 900+ online written resources! Hundreds of articles, all in one place, covering more than 96% of the RCGP curriculum - like an online encyclopedia for primary care professionals.

- 900+ continuously updated resources to give you a reliable source of information and help ease cognitive overload.
- The perfect in-practice tool with super-fast search function for quick and reliable answers in consultations.
- Ready-made protocols (we call them GEMS) to standardise practice within surgeries and PCNs.

